

MOVING®

Fabrics

Pelle	cat. G/H
Ecopelle	cat. G
New Blazer	cat. G
Corinto	cat. G
Arco	
Rete Alia	
Zen	
Spider	ecochair
Rete Attiva	
Vega	
Forat	
Xtreme	cat. F
King	cat. E
Renna	cat. E
Trevira	cat. E
Ankara	cat. D
Silvia	cat. D
Modacrilico	cat. D
Venere	cat. D
Plastic	cat. A/B

COMPOSITION



Bovine hide

FLAMMABILITY



EN 1021
BS 5852

LIGHT FASTNESS



5
EN ISO 105-B02

Tutti i colori della pelle rappresentati in questa pagina sono disponibili in due versioni:

All leather colours shown on this page are available in two versions:

categoria **G**
pelle liscia
cod. PF__

categoria **G**
plain leather
code PF__



P.02



P.03



P.04



P.05



P.07



P.08



P.10



P.11



P.13



categoria **H**
pelle forata
cod. PB__

categoria **H**
perforated leather
code PB__



P.15

ECOPELLE



EP01



EP02



EP03



EP04



EP05



EP06



EP07



EP08



EP09



EP10



EP11

CAT. **G**

COMPOSITION



65% Polyurethane
37% Cotton

WEIGHT



480 g/m²

FLAMMABILITY



EN 1021
BS 5852
CLASSE 1

ABRASION RESISTANCE



Martindale 150.000
UNI EN ISO 12947

LIGHT FASTNESS



05-06
DIN EN ISO 105-B04
5
EN ISO 105-B02
04-05
UNI EN ISO 105-E04

CAT. **G**

COMPOSITION



100% Wool

WEIGHT



430 g/m²

FLAMMABILITY



EN 1021
BS 5852
BS 7176

ABRASION RESISTANCE



Martindale 40.000
UNI EN ISO 12947

LIGHT FASTNESS



5
EN ISO 105-B02

ECO FRIENDLY



Second Nature

NEW BLAZER



NB01



NB08



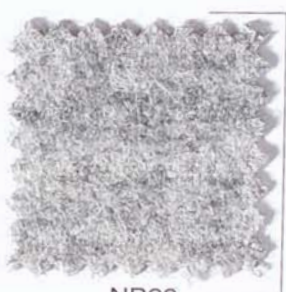
NB13



NB15



NB24



NB28

CORINTO



CR01



CR02



CR03



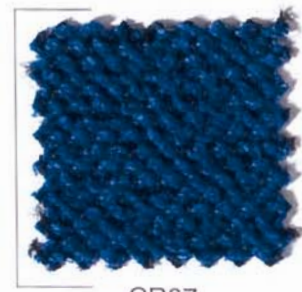
CR04



CR05



CR06



CR07



CR08



CR09

CAT. **G**

COMPOSITION



100% Polyethylene Trevira CS

WEIGHT



600 g/m²

FLAMMABILITY



EN 1021
BS 5852
BS 3320
CLASSE 1

ABRASION RESISTANCE



Pilling 5
UNI EN ISO 12945
Martindale 80.000
UNI EN ISO 12947

LIGHT FASTNESS



6
UNI EN ISO 105

ARCO

COMPOSITION



100% Polyester

WEIGHT



280 g/m²

FLAMMABILITY



CLASSE 1

ABRASION RESISTANCE



Martindale 40.000
UNI EN ISO 12947

LIGHT FASTNESS



5
EN ISO 105-B02

ECO FRIENDLY



Oeko-Tex®

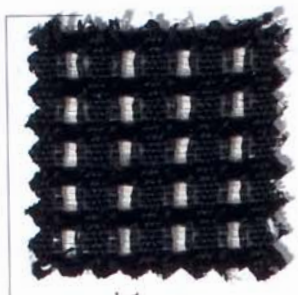


A1



A2

RETE ALIA



L1



L2

COMPOSITION



55% Polyamide
37% Polyester
8% Acrylic

WEIGHT



300 g/m²

FLAMMABILITY



EN 1021

ABRASION RESISTANCE



Martindale 65.000
UNI EN ISO 12947

LIGHT FASTNESS



5
EN ISO 105-B02

ECO FRIENDLY



Oeko-Tex®

ZEN

COMPOSITION



100% Polyester

WEIGHT



360 g/m²

ABRASION RESISTANCE



Pilling

UNI EN ISO 12945

Martindale 100.000

UNI EN ISO 12947

LIGHT FASTNESS



06-08

DIN EN ISO 105-B04



Z1



Z2



Z3



Z4

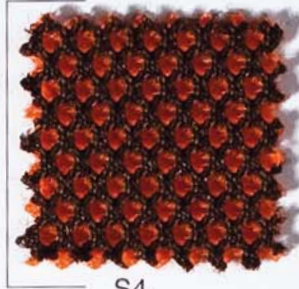
SPIDER



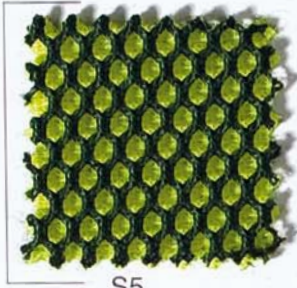
S1



S3



S4



S5



S6

only for
ECOCHAIR
collection

COMPOSITION



100% Polyester

WEIGHT



390 g/m²

FLAMMABILITY



CLASSE 1

ABRASION RESISTANCE



Martindale 52.000
UNI EN ISO 12947

LIGHT FASTNESS



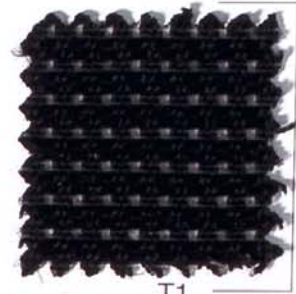
4
UNI 7633

ECO FRIENDLY



Oeko-Tex®

RETE ATTIVA



T1

COMPOSITION



55% Polyamide
35% Polyester
10% Acrylic

WEIGHT



310 g/m²

FLAMMABILITY



EN 1021

ABRASION RESISTANCE



Martindale 90.000
UNI EN ISO 12947

LIGHT FASTNESS



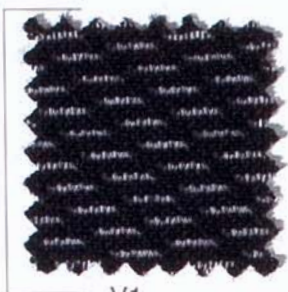
5
EN ISO 105-B02

ECO FRIENDLY

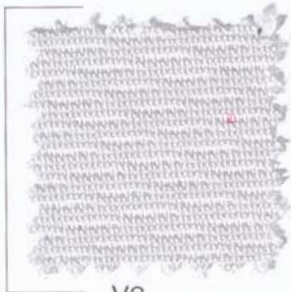


Oeko-Tex®

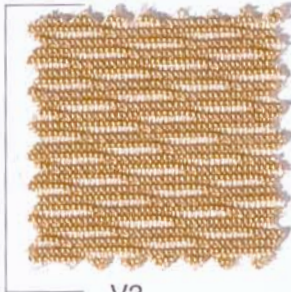
VEGA



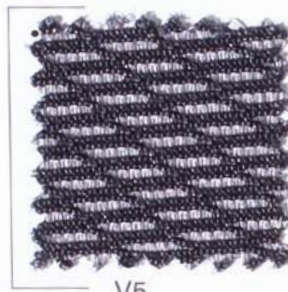
V1



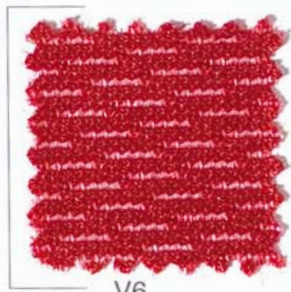
V2



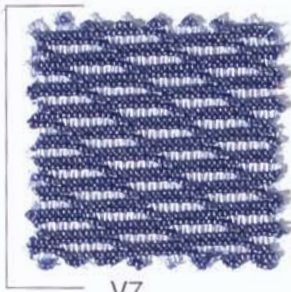
V3



V5



V6



V7

COMPOSITION



100% Polyamide cordura

WEIGHT



250 g/m²

FLAMMABILITY



BS 5852

ABRASION RESISTANCE



Martindale 52.000
UNI EN ISO 12947

LIGHT FASTNESS



4
EN ISO 105-B02

ECO FRIENDLY



Oeko-Tex®

FORAT

COMPOSITION



100% High Tenacity Polyester

WEIGHT



350 g/m²

FLAMMABILITY



EN 1021
BS 7176

ABRASION RESISTANCE

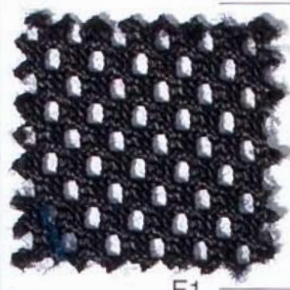


Martindale 100.000
UNI EN ISO 12947

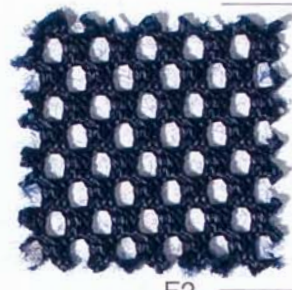
LIGHT FASTNESS



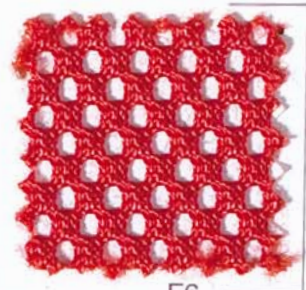
6
EN ISO 105-B02



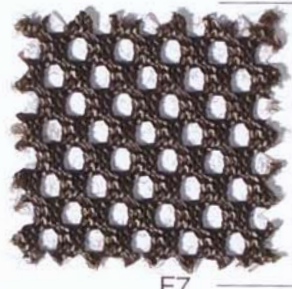
F1



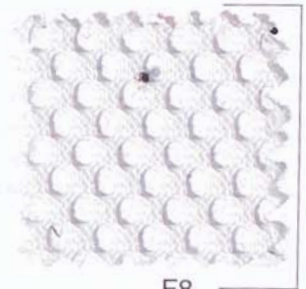
F2



F6

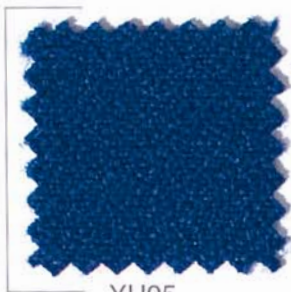


F7



F8

XTREME



YU05



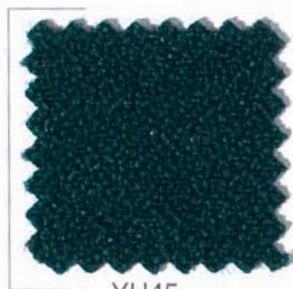
YU09



YU26



YU27



YU45



YU66



YU72



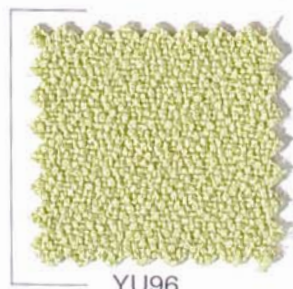
YU76



YU79



YU94



YU96

CAT. **F**

COMPOSITION



100% Xtreme FR

WEIGHT



310 g/m²

FLAMMABILITY



EN 1021
BS 5852
BS 7176
CLASSE 1

ABRASION RESISTANCE



Pilling
UNI EN ISO 12945
Martindale 100.000
UNI EN ISO 12947

LIGHT FASTNESS



04-05
DIN EN ISO 105-B04
6
EN ISO 105-B02
04-05
UNI EN ISO 105-E04

KING

CAT. **E**

COMPOSITION



100% Polyester Trevira CS

WEIGHT



420 g/m²

FLAMMABILITY



EN 1021
TREVIRA CS
CLASSE 1
CLASSE M1

ABRASION RESISTANCE



Pilling
UNI EN ISO 12945
Martindale 100.000
UNI EN ISO 12947

LIGHT FASTNESS



6
EN ISO 105-B2

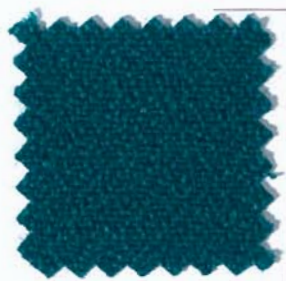
ECO FRIENDLY



Oeko-Tex®



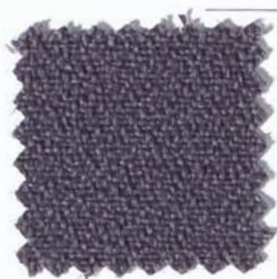
K117



K123



K127



K129



K133



K134



K135



K150



K171



K172

RENNA



RE01



RE03



RE10



RE20



RE22



RE23

CAT. **E**

COMPOSITION



80% Cotton
20% Polyurethane

WEIGHT



260 g/m²

FLAMMABILITY



BS 5852

ABRASION RESISTANCE



Martindale 40.000
UNI EN ISO 12947

LIGHT FASTNESS



5
EN ISO 105-B02

CAT. **E**

TREVIRA

COMPOSITION



100% Modacrylic FRS Acrylic

WEIGHT



365 g/m²

FLAMMABILITY



EN 1021
BS 5852
CLASSE 1

ABRASION RESISTANCE



Pilling 3-4
UNI EN ISO 12945
Martindale 30.000
UNI EN ISO 12947

LIGHT FASTNESS



5
EN ISO 105-B02
5
UNI EN ISO 105-E04

ECO FRIENDLY



Oeko-Tex®



TR03



TR04



TR06

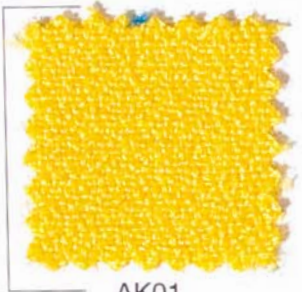


TR07



TR08

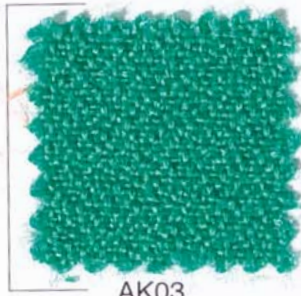
ANKARA



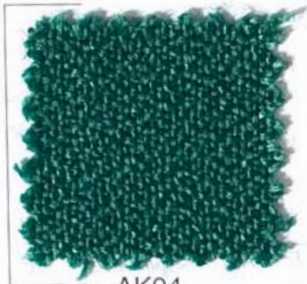
AK01



AK02



AK03



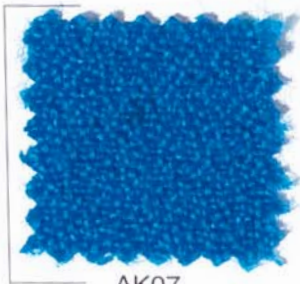
AK04



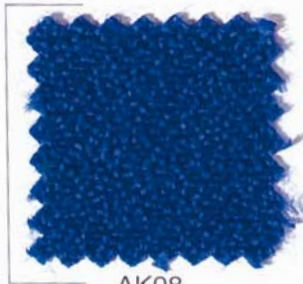
AK05



AK06



AK07



AK08



AK09



AK10

CAT. **D**

COMPOSITION



100 % Polypropylene FR

WEIGHT



245 g/m²

FLAMMABILITY



BS 5852
CLASSE 1

ABRASION RESISTANCE



Pilling
UNI EN ISO 12945
Martindale 40.000
UNI EN ISO 12947

LIGHT FASTNESS



5/6
EN ISO 105-B02
4/5
UNI EN ISO 105-E04

ECO FRIENDLY



100% Recyclable

ECO FRIENDLY



Oeko-Tex®

SILVIA

CAT. **D**

COMPOSITION

 60% Cotton
40% Polyurethane

WEIGHT

 360 g/m²

ABRASION RESISTANCE

 Martindale 50.000
UNI EN ISO 12947

LIGHT FASTNESS

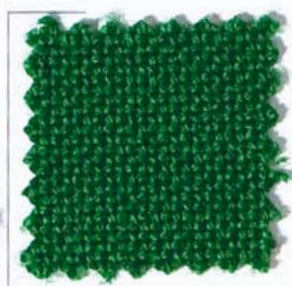
 4-5
EN ISO 105-B02



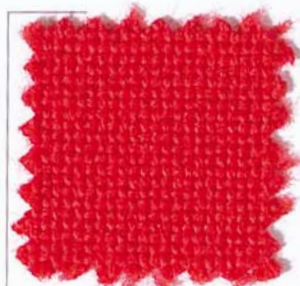
MODACRILICO



MD05



MD07



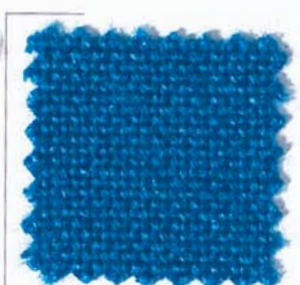
MD14



MD16



MD21



MD30

CAT. **D**

COMPOSITION



100% Acrylic FR

WEIGHT



290 g/m²

FLAMMABILITY



BS 5852
BS EN 1021 1-2
CLASSE 1

ABRASION RESISTANCE



Pilling
UNI EN ISO 12945
Martindale 30.000
UNI EN ISO 12947

LIGHT FASTNESS



5
EN ISO 105-B02
4
UNI EN ISO 105-E04

ECO FRIENDLY



Oeko-Tex®

CAT. **D**

VENERE

COMPOSITION



100% Polypropylene FR

WEIGHT



350 g/m²

FLAMMABILITY



EN 1021
BS 5852
BS 7176
CLASSE 1

ABRASION RESISTANCE



Pilling
UNI EN ISO 12945
Martindale 50.000
UNI EN ISO 12947

LIGHT FASTNESS



5
EN ISO 105-B02

ECO FRIENDLY



Oeko-Tex®
100% Recyclable



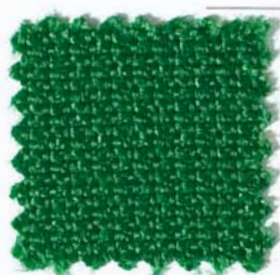
VN10



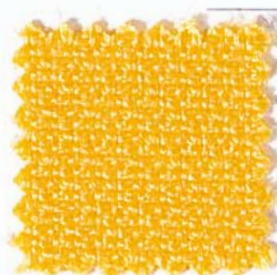
VN20



VN31



VN45



VN51



VN61



VN65

OPTIONS PLASTIC COLOURS

CAT. **A/B**

Pretty



PLAC



PLVC

Pretty/Zip



PLBC



PLGA

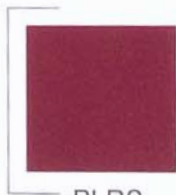


PLRC

Zip/Era



PLVS



PLRS



PLBS

Zip



PLGC

Zip/Era/Pretty



PLNN